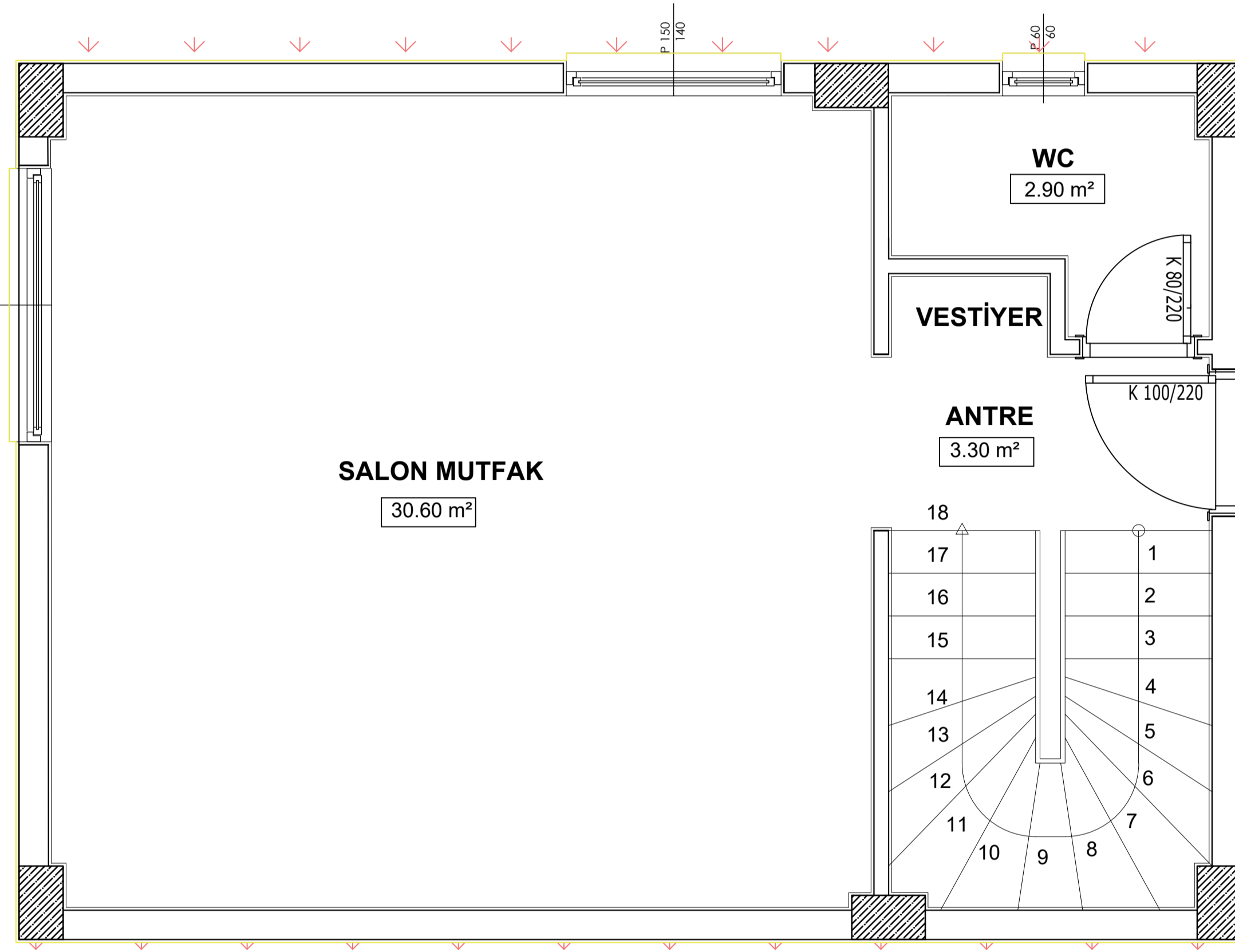


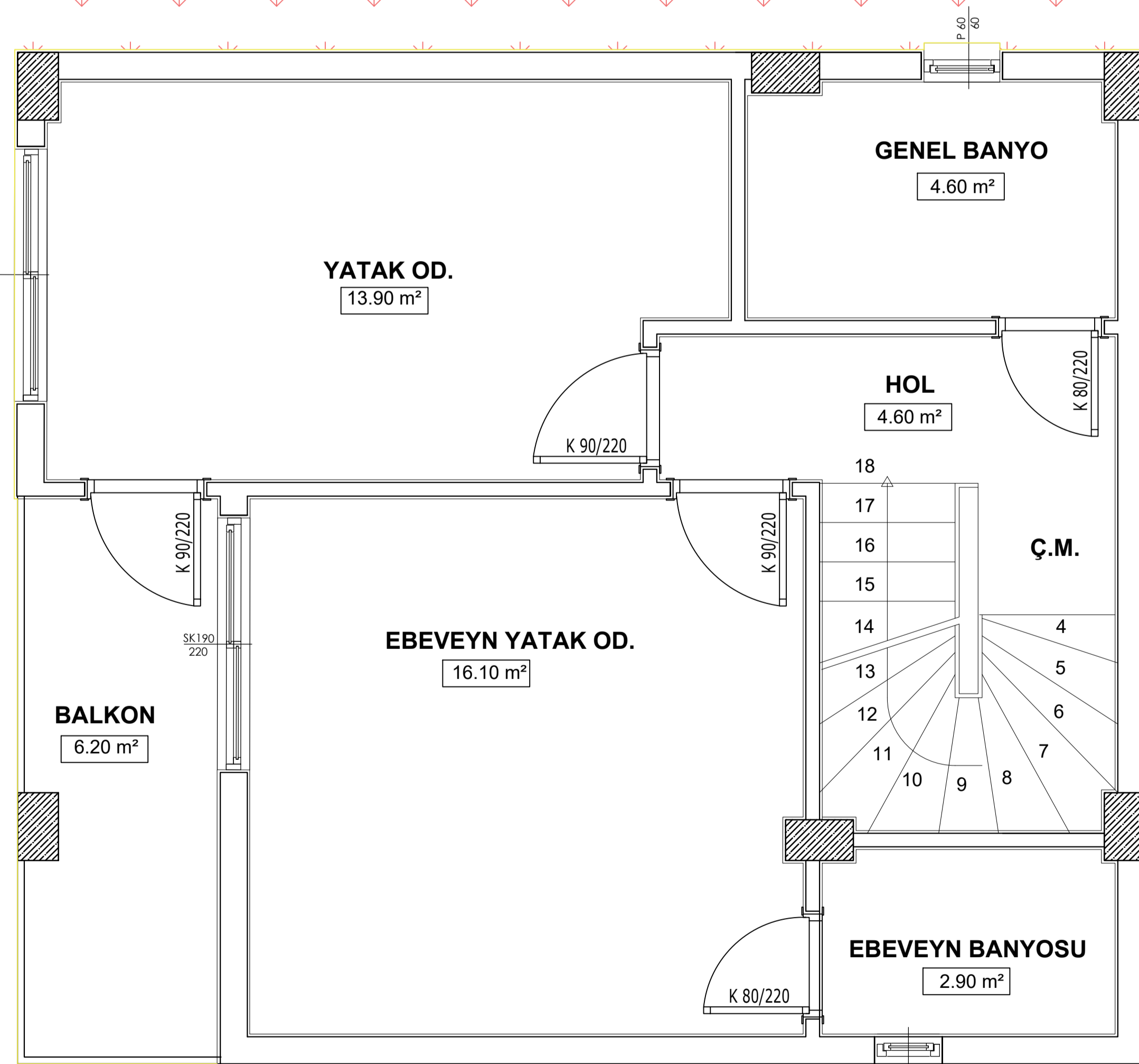
**BODRUM KAT PLANI**  
**ALAN: 49.60m<sup>2</sup>**

A BLOK 2 + 1 VİLLA (BODRURLU)	
TOPLAM	
BRÜT ALAN	162.30m <sup>2</sup>
NET ALAN	135.30m <sup>2</sup>
BAHÇE KULLANIMI	140.00m <sup>2</sup>
BODRUM KAT ALAN	
1 ENERJİ ODASI	17.00m <sup>2</sup>
2 SU DEPOSU	12.70m <sup>2</sup>
3 HOL	4.00m <sup>2</sup>
4 MERDİVEN	5.50m <sup>2</sup>
TOPLAM ALAN	39.20m <sup>2</sup>



**ZEMİN KAT PLANI**  
**ALAN: 50.70m<sup>2</sup>**

A BLOK 2 + 1 VİLLA (BODRURLU)	
TOPLAM	
BRÜT ALAN	162.30m <sup>2</sup>
NET ALAN	135.30m <sup>2</sup>
BAHÇE KULLANIMI	140.00m <sup>2</sup>
ZEMİN KAT ALAN	
1 SALON-MUTFAK	30.60m <sup>2</sup>
2 WC	2.90m <sup>2</sup>
3 ANTRE	3.30m <sup>2</sup>
4 MERDİVEN	5.50m <sup>2</sup>
TOPLAM ALAN	42.30m <sup>2</sup>



**1. KAT PLANI**  
**ALAN: 62.00m<sup>2</sup>**

A BLOK 2 + 1 VİLLA (BODRURLU)	
TOPLAM	
BRÜT ALAN	162.30m <sup>2</sup>
NET ALAN	135.30m <sup>2</sup>
BAHÇE KULLANIMI	140.00m <sup>2</sup>
1.KAT ALAN	
1 E.YATAK ODASI	16.10m <sup>2</sup>
2 YATAK ODASI	13.90m <sup>2</sup>
3 HOL	4.60m <sup>2</sup>
4 MERDİVEN	5.50m <sup>2</sup>
5 BALKON	6.20m <sup>2</sup>
6 GENEL BANYO	4.60m <sup>2</sup>
7 E.BANYOSU	2.90m <sup>2</sup>
TOPLAM ALAN	53.80m <sup>2</sup>