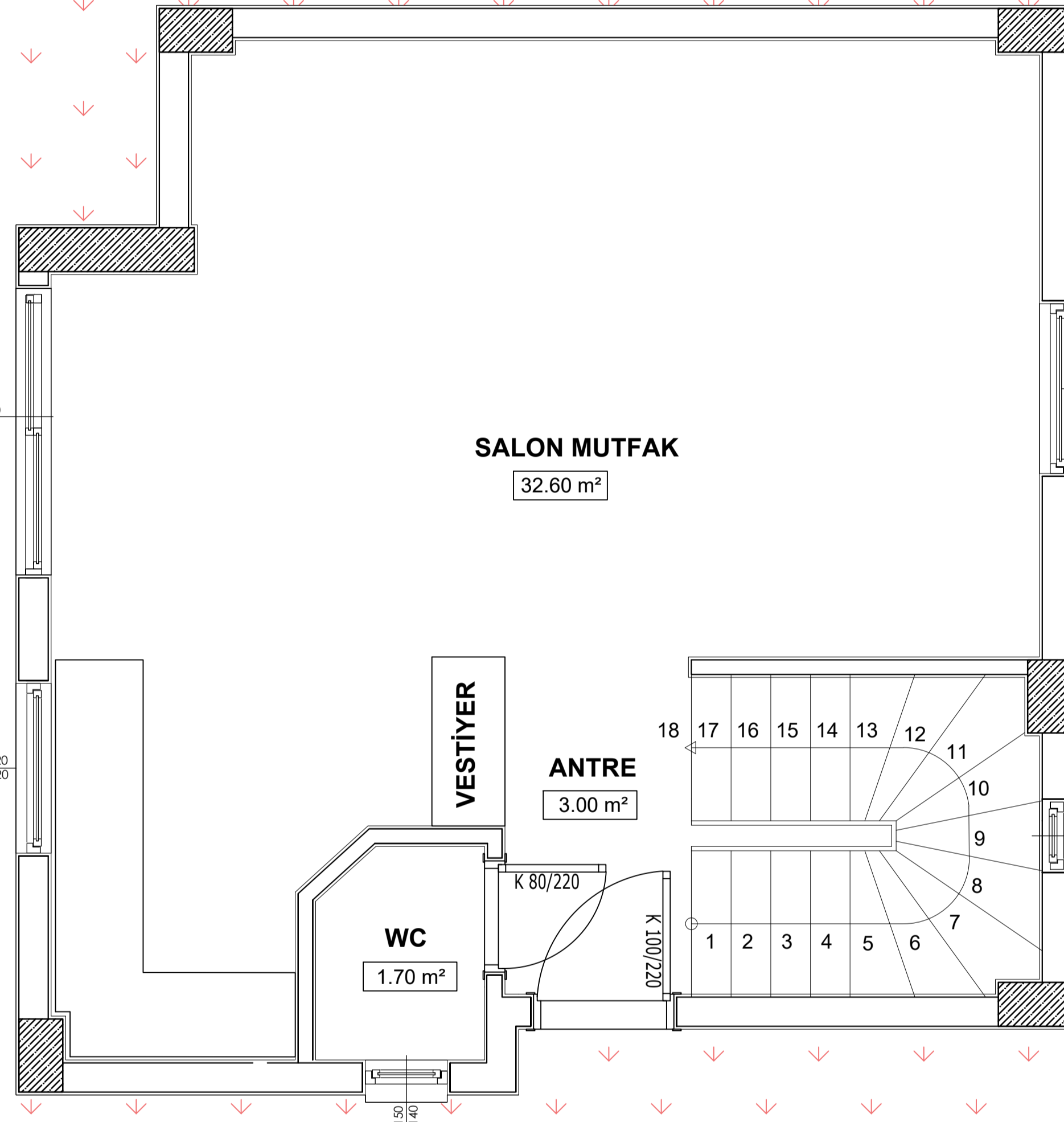


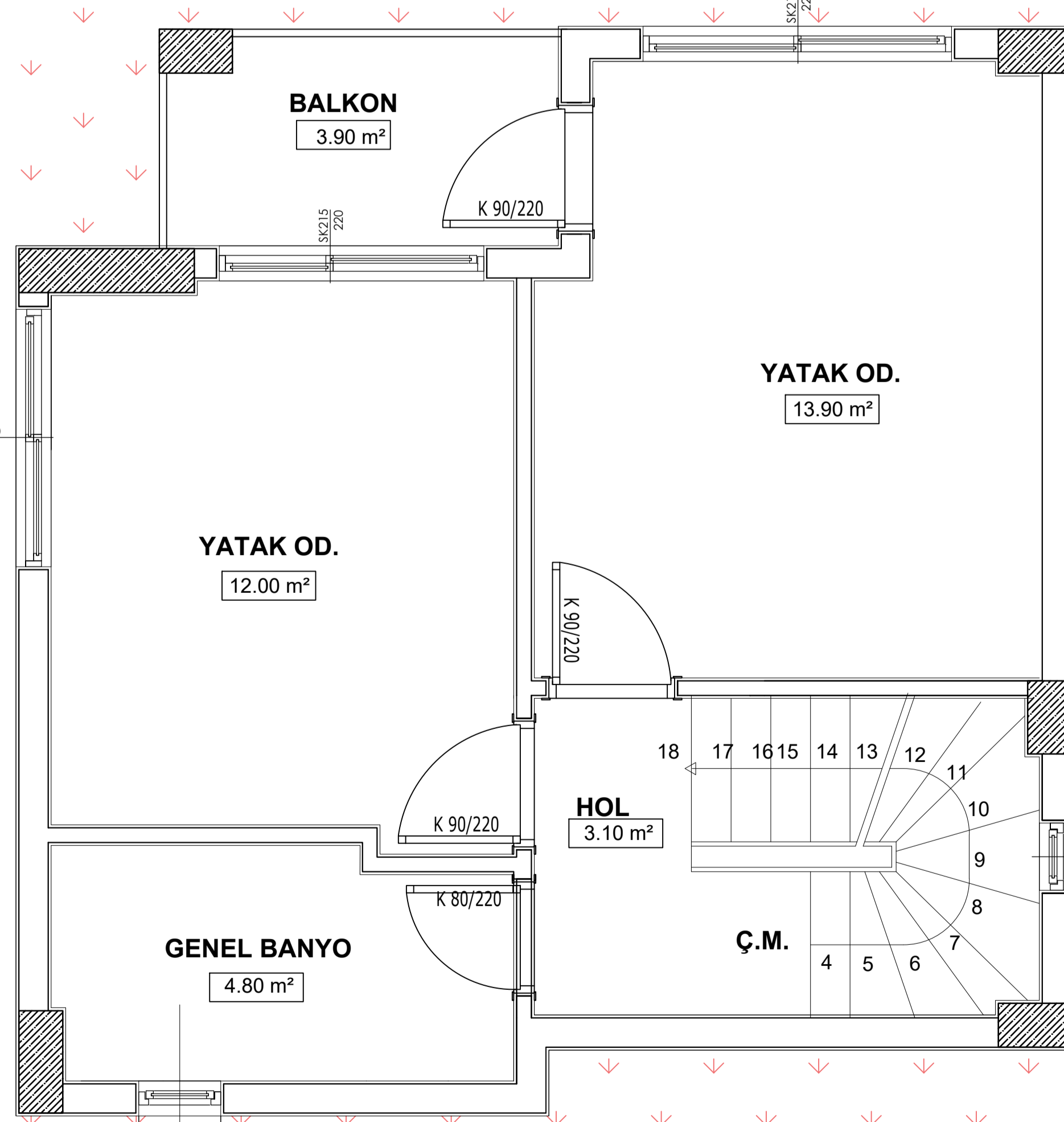
B BLOK 2 + 1 VİLLA (BODRURLU)	
TOPLAM	
BRÜT ALAN	151.90 _{m2}
NET ALAN	126.40 _{m2}
BAHÇE KULLANIMI	150.00 _{m2}
BODRUM KAT ALAN	
1 ENERJİ ODASI	14.70 _{m2}
2 SU DEPOSU	19.00 _{m2}
3 HOL	2.70 _{m2}
4 MERDİVEN	5.00 _{m2}
TOPLAM ALAN	41.40 _{m2}

BODRUM KAT PLANI
ALAN: 50.20_{m2}



B BLOK 2 + 1 VİLLA (BODRURLU)	
TOPLAM	
BRÜT ALAN	151.90 _{m2}
NET ALAN	126.40 _{m2}
BAHÇE KULLANIMI	150.00 _{m2}
ZEMİN KAT ALAN	
1 SALON-MUTFAK	32.60 _{m2}
2 WC	1.70 _{m2}
3 ANTRE	3.00 _{m2}
4 MERDİVEN	5.00 _{m2}
TOPLAM ALAN	42.30 _{m2}

ZEMİN KAT PLANI
ALAN: 51.40_{m2}



B BLOK 2 + 1 VİLLA (BODRURLU)	
TOPLAM	
BRÜT ALAN	151.90 _{m2}
NET ALAN	126.40 _{m2}
BAHÇE KULLANIMI	150.00 _{m2}
1. KAT ALAN	
1 YATAK ODASI	13.90 _{m2}
2 YATAK ODASI	12.00 _{m2}
3 HOL	3.10 _{m2}
4 MERDİVEN	5.00 _{m2}
5 BALKON	3.90 _{m2}
6 GENEL BANYO	4.80 _{m2}
TOPLAM ALAN	42.70 _{m2}

1. KAT PLANI
ALAN: 50.30_{m2}