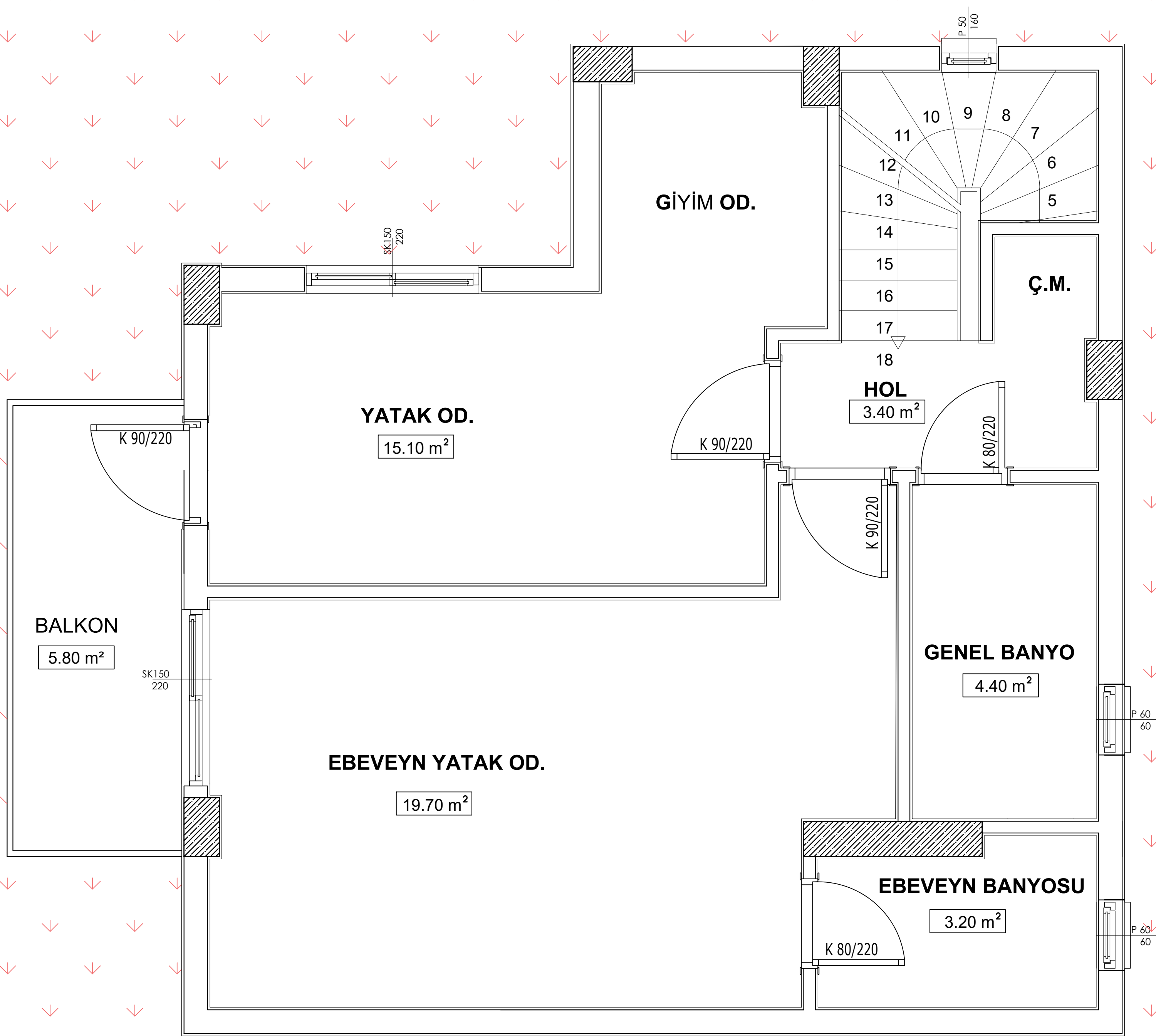


ZEMİN KAT PLANI
ALAN: 47.40m²

D BLOK 2 + 1 VİLLA	
TOPLAM	
BRÜT ALAN	113.60m ²
NET ALAN	95.90m ²
BAHÇE KULLANIMI	150.00m ²
ZEMİN KAT ALAN	
1 SALON-MUTFAK	28.00m ²
2 WC	3.00m ²
3 ANTRE	3.50m ²
4 MERDİVEN	3.40m ²
5 KILER	1.50m ²
TOPLAM ALAN	39.40m ²



1. KAT PLANI
ALAN: 66.20m²

D BLOK 2 + 1 VİLLA	
TOPLAM	
BRÜT ALAN	113.60m ²
NET ALAN	95.90m ²
BAHÇE KULLANIMI	150.00m ²
1. KAT ALAN	
1 E.YATAK ODASI	19.70m ²
2 YATAK ODASI	15.10m ²
3 HOL	3.40m ²
4 MERDİVEN	4.90m ²
5 BALKON	5.80m ²
6 GENEL BANYO	4.40m ²
7 E.BANYOSU	3.20m ²
TOPLAM ALAN	56.50m ²